

See attached schedule for Easement, Covenant and Amalgamation details

26496 NB
RMA 12222007/1

T1/12

Land District: South Auckland

Lots 1, 2, 119 - 171, 184 - 191, 203, 327, 328, 330, 331, 338, 346, 347, 354 & 355
being a Subdivision of Lot 2 DP 316326

Surveyor: Geoffrey Edwin Osbaldiston
Firm: Cato Bolam Consultants Ltd (Orewa)

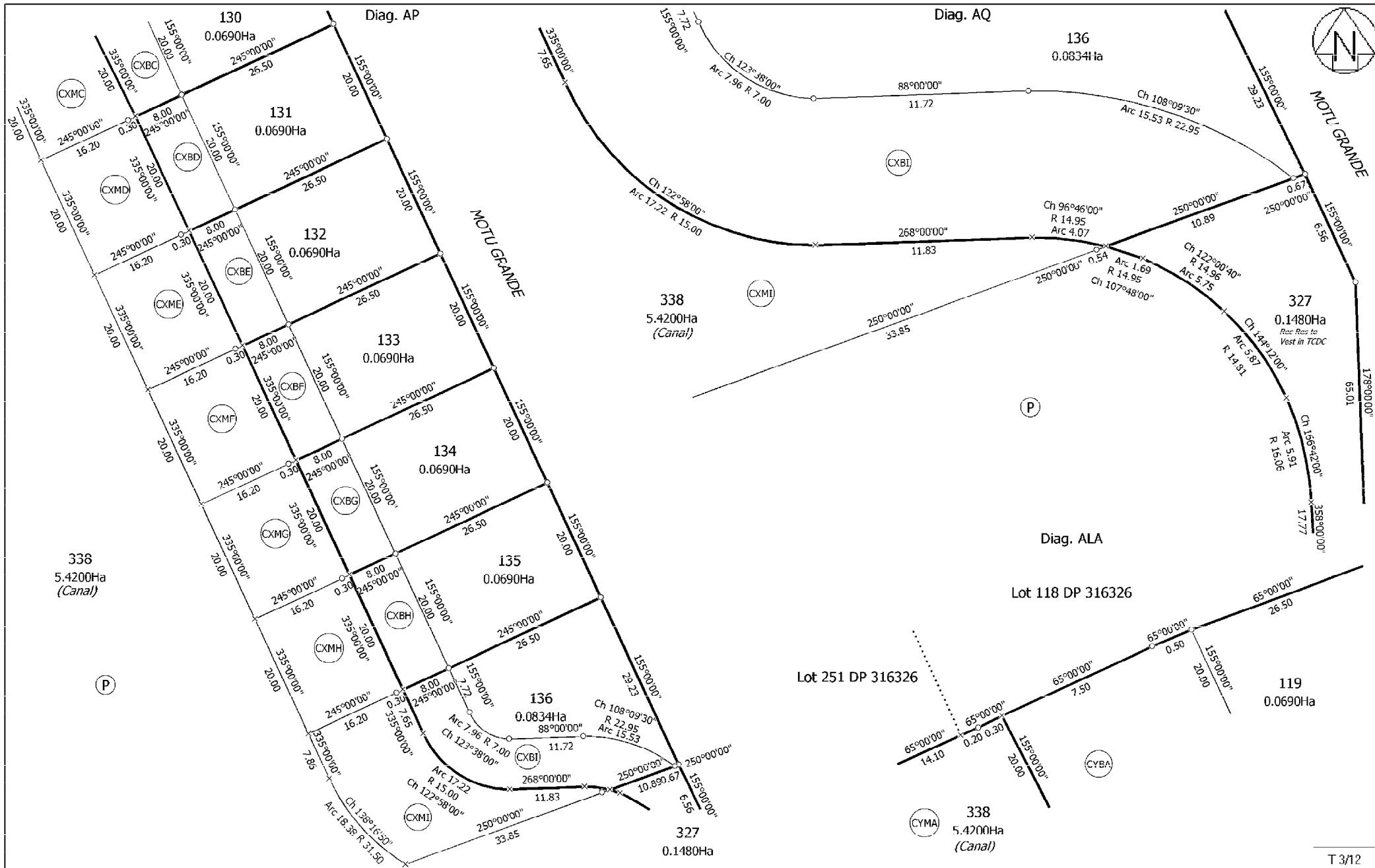
Title Plan
DP 428765

Deposited on: 24/12/2010

Digitally Generated Plan
Generated on: 16/02/2011 4:53pm Page 12 of 23



Land District: South Auckland Digitally Generated Plan Generated on: 16/02/2011 4:53pm Page 13 of 23	Lots 1, 2, 119 - 171, 184 - 191, 203, 327, 328, 330, 331, 338, 346, 347, 354 & 355 being a Subdivision of Lot 2 DP 316326	Surveyor: Geoffrey Edwin Osbaldiston Firm: Cato Bolam Consultants Ltd (Orewa)	Title Plan DP 428765 Deposited on: 24/12/2010
--	--	--	---

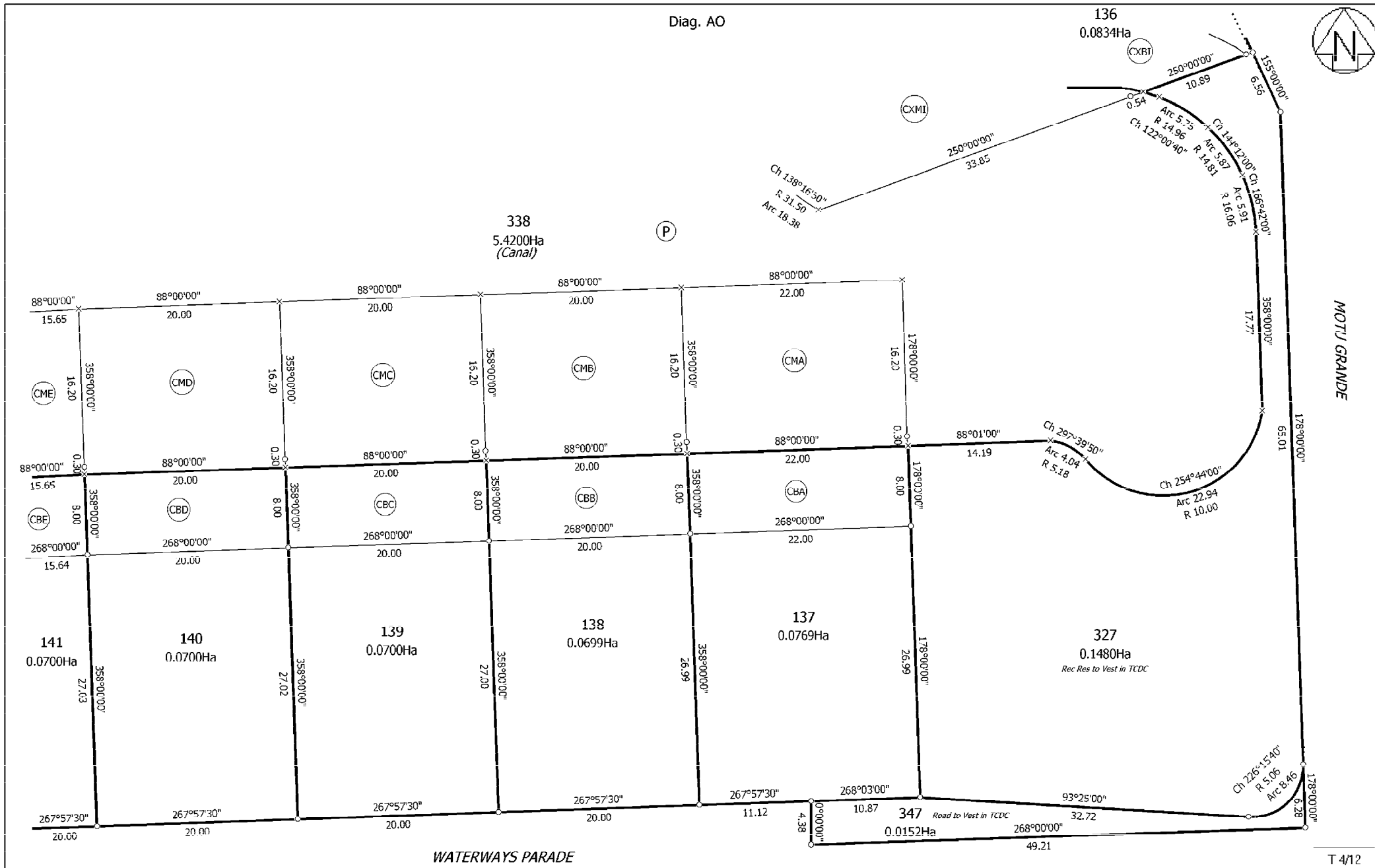


Land District: South Auckland
 Digitally Generated Plan
 Generated on: 16/02/2011 4:53pm Page 14 of 23

Lots 1, 2, 119 - 171, 184 - 191, 203, 327, 328, 330, 331, 338, 346, 347, 354 & 355
 being a Subdivision of Lot 2 DP 316326

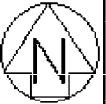
Surveyor: Geoffrey Edwin Osbaldiston
 Firm: Cato Bolam Consultants Ltd (Orewa)

Title Plan
 DP 428765
 Deposited on: 24/12/2010



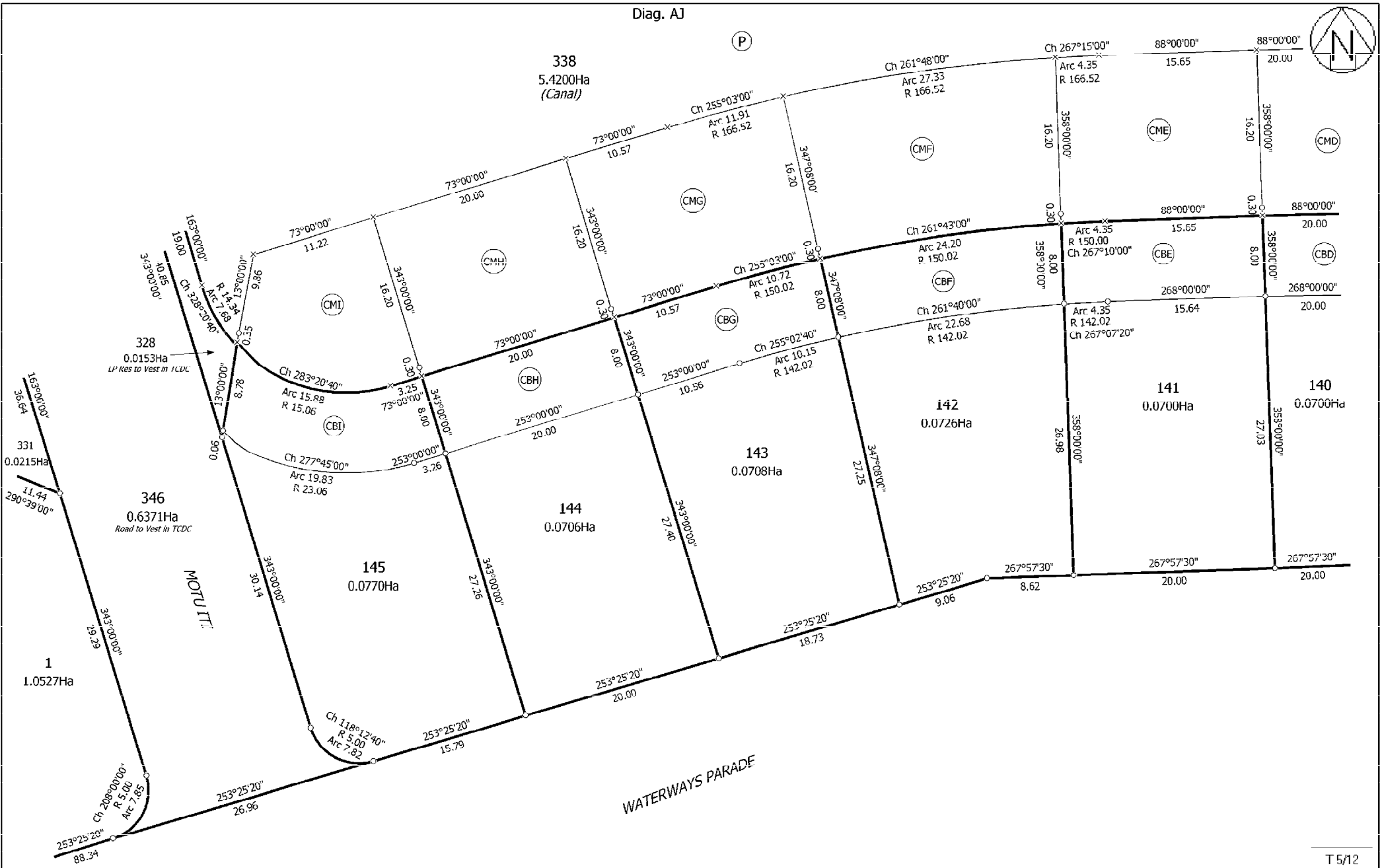
Land District: South Auckland Digitally Generated Plan Generated on: 16/02/2011 4:53pm Page 15 of 23	Lots 1, 2, 119 - 171, 184 - 191, 203, 327, 328, 330, 331, 338, 346, 347, 354 & 355 being a Subdivision of Lot 2 DP 316326	Surveyor: Geoffrey Edwin Osbaldiston Firm: Cato Bolam Consultants Ltd (Orewa)	Title Plan DP 428765 Deposited on: 24/12/2010
--	--	--	---

Diag. AJ



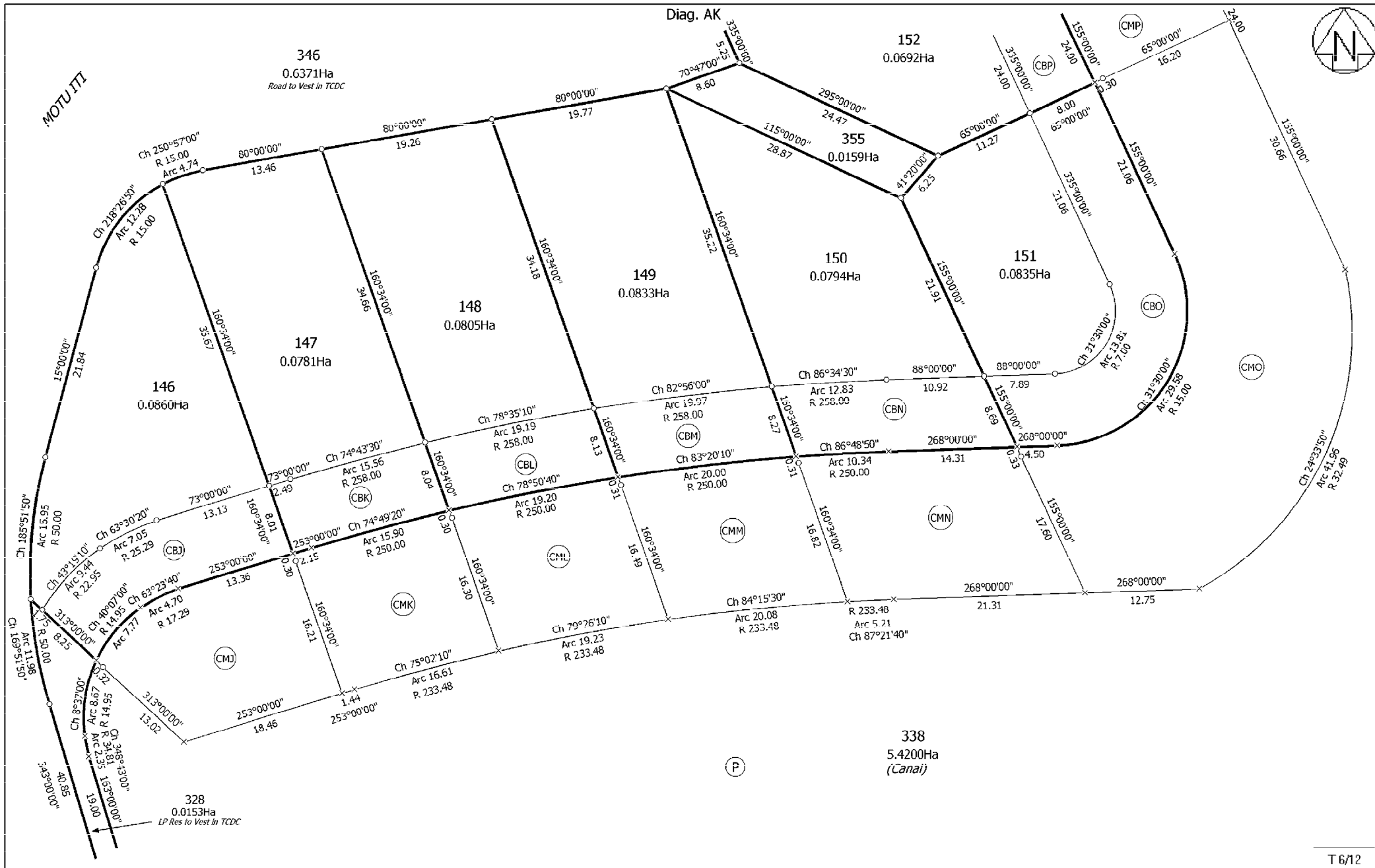
338
5.4200Ha
(Canal)

(P)



T 5/12

<p>Land District: South Auckland</p> <p>Digitally Generated Plan Generated on: 16/02/2011 4:53pm Page 16 of 23</p>	<p>Lots 1, 2, 119 - 171, 184 - 191, 203, 327, 328, 330, 331, 338, 346, 347, 354 & 355 being a Subdivision of Lot 2 DP 316326</p>	<p>Surveyor: Geoffrey Edwin Osbaldiston Firm: Cato Bolam Consultants Ltd (Orewa)</p>	<p>Title Plan DP 428765 Deposited on: 24/12/2010</p>
--	--	--	--

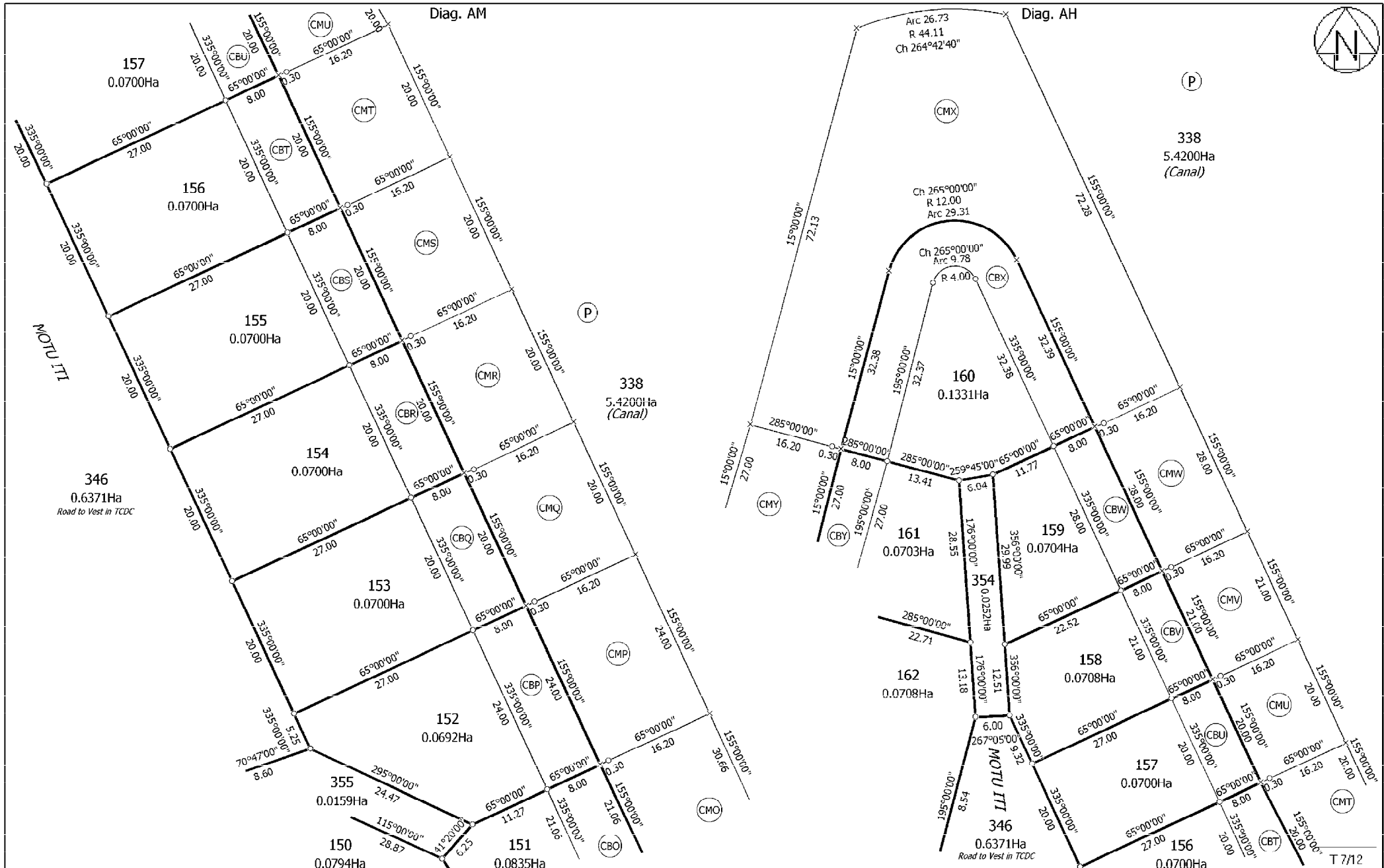


Land District: South Auckland
 Digitally Generated Plan
 Generated on: 16/02/2011 4:53pm Page 17 of 23

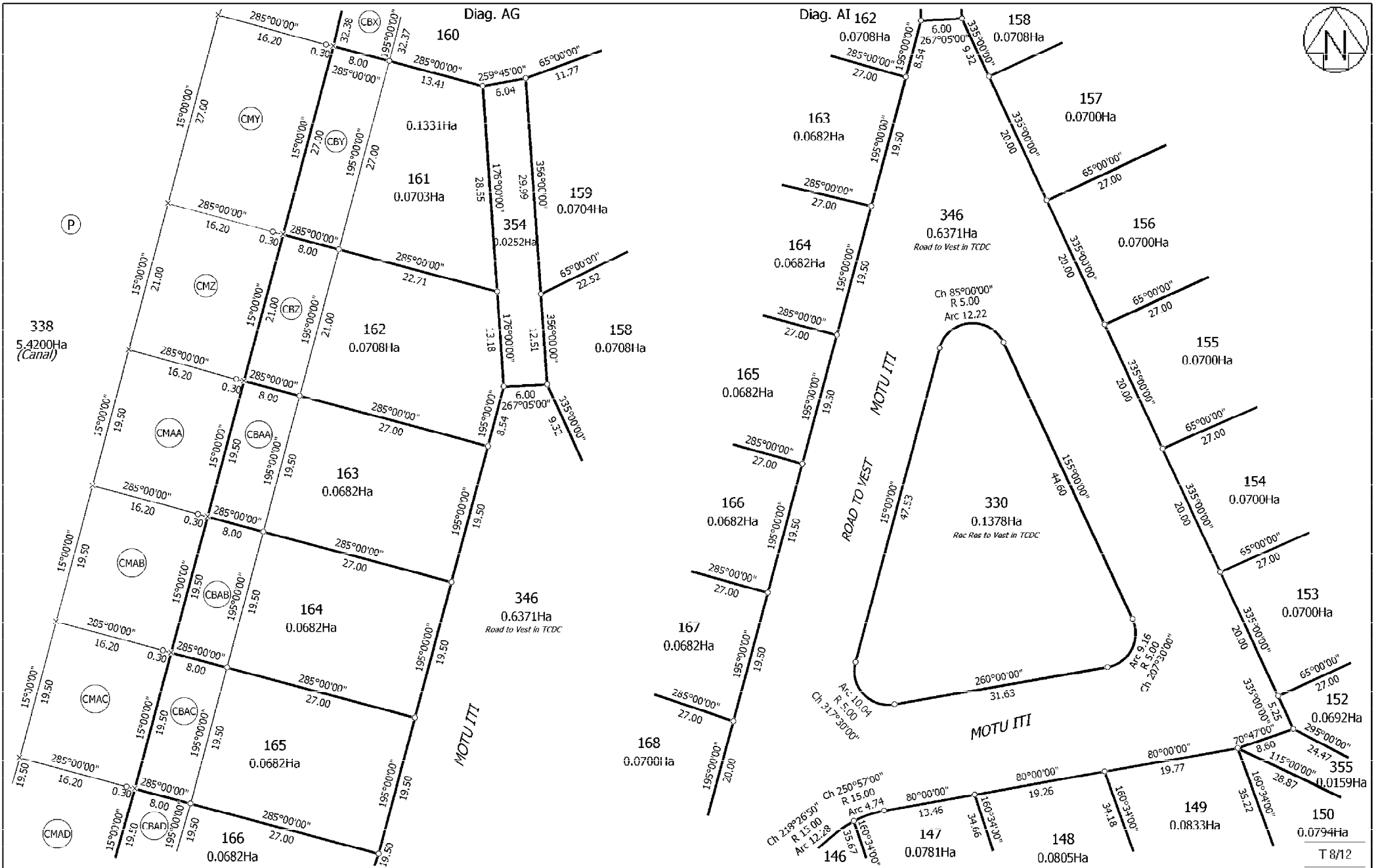
Lots 1, 2, 119 - 171, 184 - 191, 203, 327, 328, 330, 331, 338, 346, 347, 354 & 355
 being a Subdivision of Lot 2 DP 316326

Surveyor: Geoffrey Edwin Osbaldiston
 Firm: Cato Bolam Consultants Ltd (Orewa)

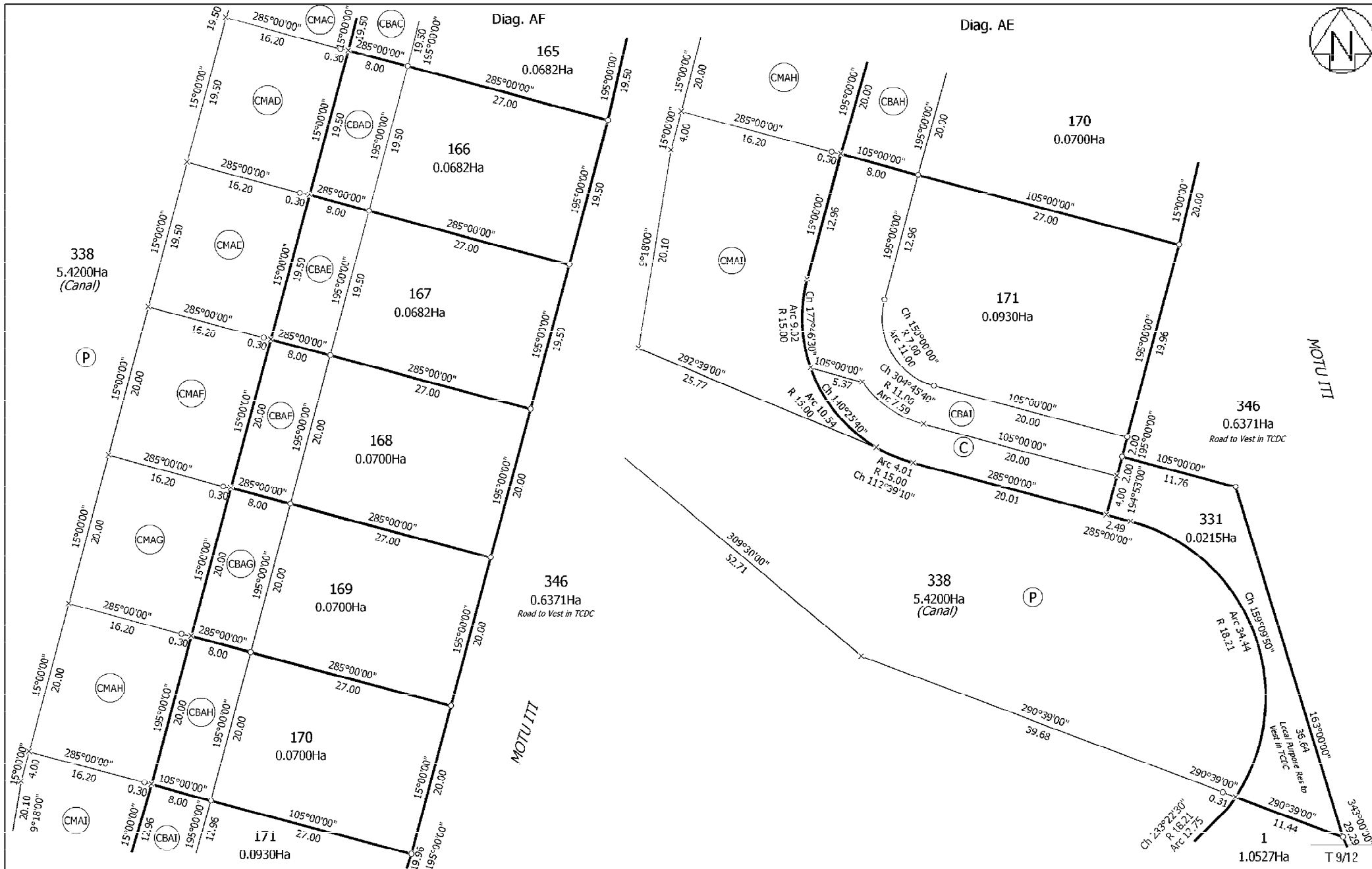
Title Plan
 DP 428765
 Deposited on: 24/12/2010



Land District: South Auckland Digitally Generated Plan Generated on: 16/02/2011 4:53pm Page 18 of 23	Lots 1, 2, 119 - 171, 184 - 191, 203, 327, 328, 330, 331, 338, 346, 347, 354 & 355 being a Subdivision of Lot 2 DP 316326	Surveyor: Geoffrey Edwin Osbaldiston Firm: Cato Bolam Consultants Ltd (Orewa)	Title Plan DP 428765 Deposited on: 24/12/2010
--	--	--	---



Land District: South Auckland Digitally Generated Plan Generated on: 16/02/2011 4:53pm Page 19 of 23	Lots 1, 2, 119 - 171, 184 - 191, 203, 327, 328, 330, 331, 338, 346, 347, 354 & 355 being a Subdivision of Lot 2 DP 316326	Surveyor: Geoffrey Edwin Osbaldiston Firm: Cato Bolam Consultants Ltd (Orewa)	Title Plan DP 428765 Deposited on: 24/12/2010
--	--	--	---

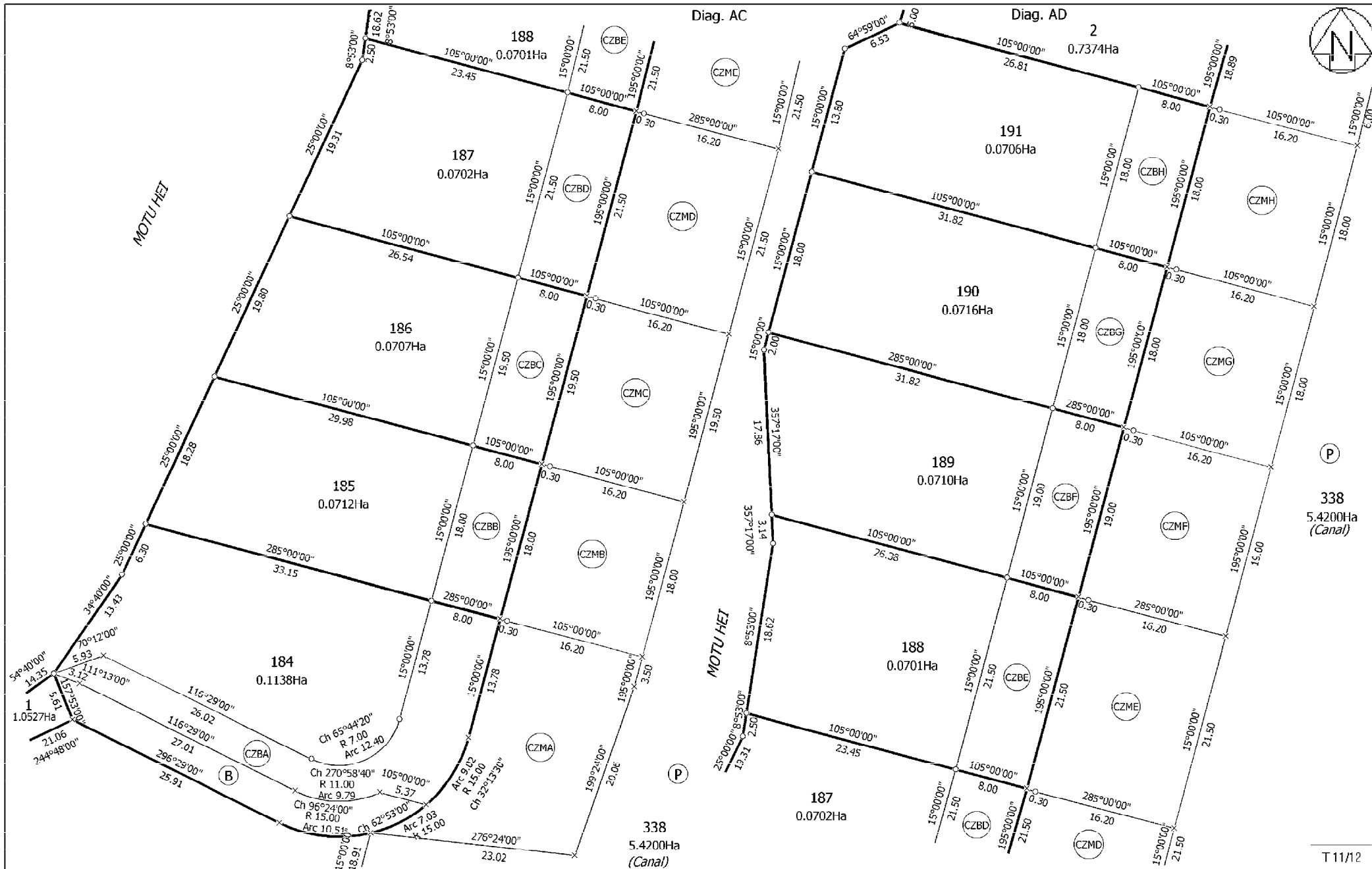


Land District: South Auckland
 Digitally Generated Plan
 Generated on: 16/02/2011 4:53pm Page 20 of 23

Lots 1, 2, 119 - 171, 184 - 191, 203, 327, 328, 330, 331, 338, 346, 347, 354 & 355
 being a Subdivision of Lot 2 DP 316326

Surveyor: Geoffrey Edwin Osbaldiston
 Firm: Cato Bolam Consultants Ltd (Orewa)

Title Plan
 DP 428765
 Deposited on: 24/12/2010

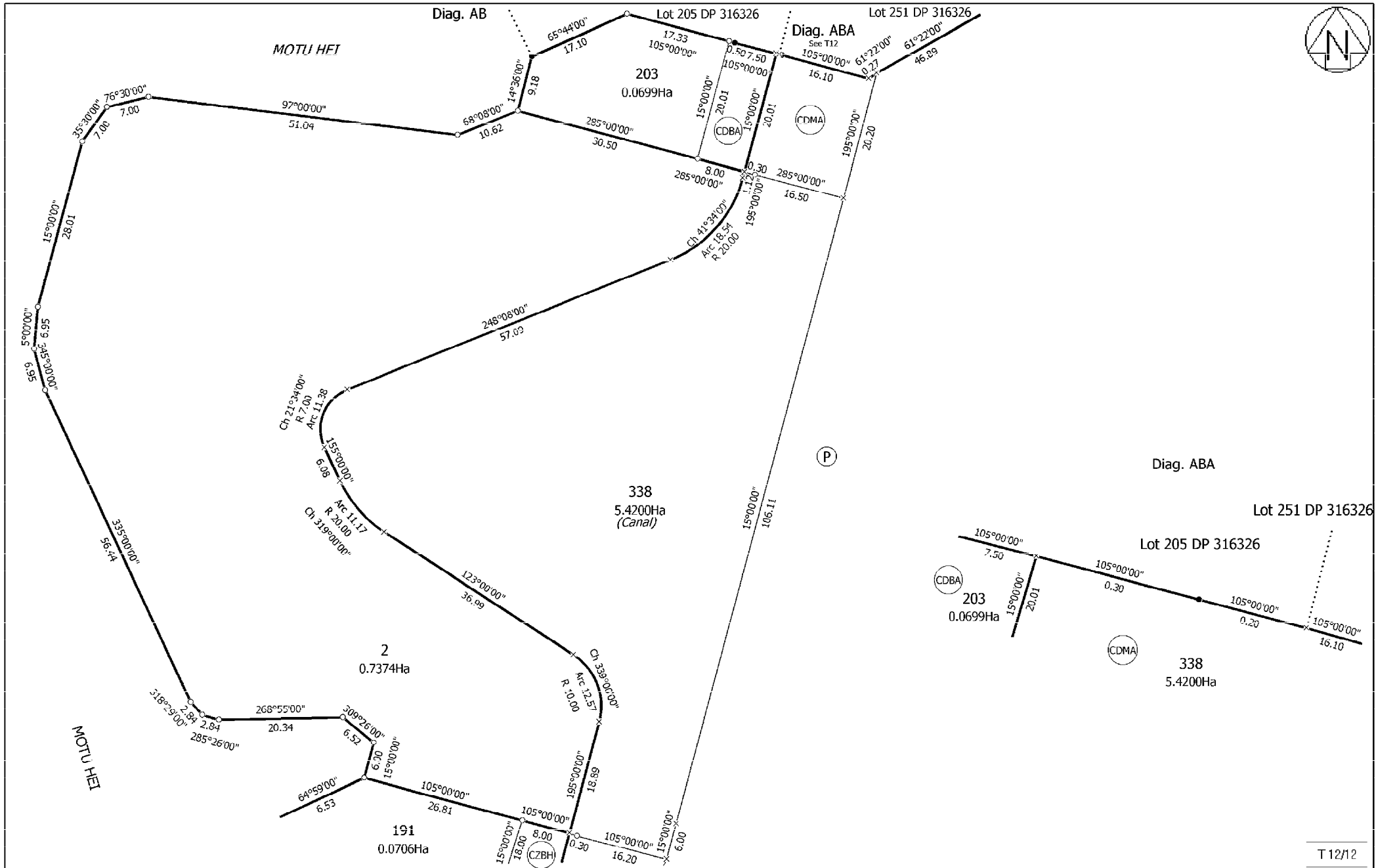


Land District: South Auckland
 Digitally Generated Plan
 Generated on: 16/02/2011 4:53pm Page 22 of 23

Lots 1, 2, 119 - 171, 184 - 191, 203, 327, 328, 330, 331, 338, 346, 347, 354 & 355
 being a Subdivision of Lot 2 DP 316326

Surveyor: Geoffrey Edwin Osbaldiston
 Firm: Cato Bolam Consultants Ltd (Orewa)

Title Plan
 DP 428765
 Deposited on: 24/12/2010



<p>Land District: South Auckland</p> <p>Digitally Generated Plan Generated on: 16/02/2011 4:53pm Page 23 of 23</p>	<p>Lots 1, 2, 119 - 171, 184 - 191, 203, 327, 328, 330, 331, 338, 346, 347, 354 & 355 being a Subdivision of Lot 2 DP 316326</p>	<p>Surveyor: Geoffrey Edwin Osbaldiston Firm: Cato Bolam Consultants Ltd (Orewa)</p>	<p>Title Plan DP 428765 Deposited on: 24/12/2010</p>
--	--	--	--

T 12/12